



Commonwealth Electoral Roll (De Jure)

Commonwealth Custodians – Crown Servants

<https://commonwealthcustodians.org>

<https://commonwealthpublicnotice.org>

<https://commonwealthcustodians.org/enrolment-form/>

<https://commonwealthcustodians.org/electoral-roll-stat-decs-aa-ab-ba-bb-ca-cb/>

Commonwealth Signature & Identification

When you enrol on the Electoral Roll, you are not merely filling out a form.

You are placing evidence of your **nationality, standing, and capacity** on the public record.

Because of this, **the way you sign — and how you identify yourself — matters.**

A New Signature for Commonwealth Nationals

The signature most people currently use has been shaped over time to operate within the corporate system. That signature is commonly recognised as acting for a legal fiction or administrative “person”.

Commonwealth documents require a **different form of signing** — one that reflects you acting **knowingly and lawfully within The Commonwealth**, not as a corporate construct within a political society.

This Will Be Your Commonwealth Signature Going Forward

Once adopted, this autograph must be used **consistently on all Commonwealth documents**

Consistency matters because:

- it establishes continuity of identity,
- it prevents later mischaracterisation,
- and it strengthens the evidentiary record.

Changing signatures repeatedly weakens standing.

A settled autograph strengthens it.

What This Signature Represents

Your Commonwealth signature is:

- an **autograph** (living handwriting),
- made in **full knowledge and intent**,
- executed in a **declared capacity**.

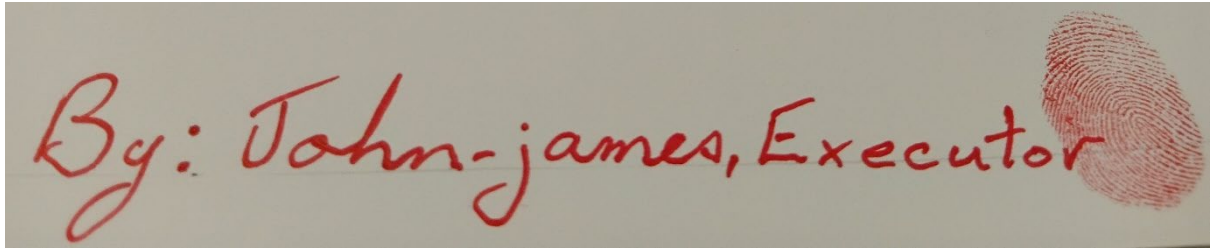
It clearly distinguishes:

- the living man or woman,
from
- any corporate or administrative construct.

This is not symbolic. It is **practical, lawful, and evidentiary**.

Example:

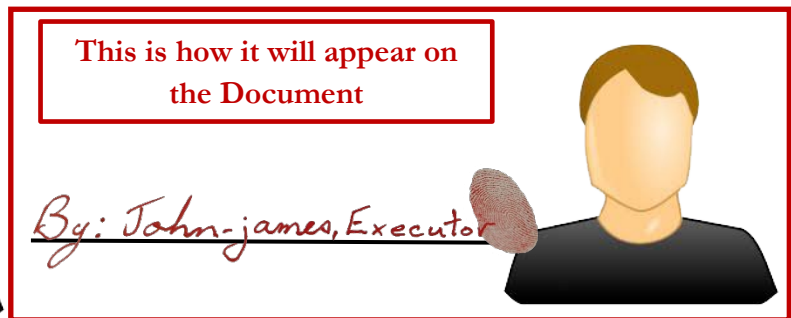
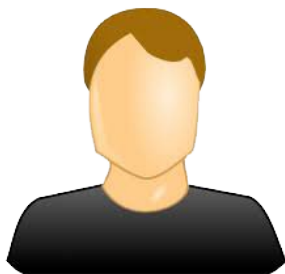
Photo of Signature and Thumbprint:



Same photo with Background removed for signing:



Head and Shoulder photo (The Enrolment Document is also an Identity Document – evidencing Nationality)



Admin will Crop and Remove Background from Signature and Image...

The Document will be prepared in advance of signing over the Net - witnessed by a Commonwealth Justice of the Peace via Video Link...

How to Create Your Signature for Signing Document

1. Use a **clean white piece of paper**.
2. Lightly draw a **faint pencil line** to keep the signature straight.
3. Using a **red gel pen (medium tip)**:
 - write your name in **readable, running handwriting**,
 - **do not print your name**,
 - **do not use block capitals**.
4. **Print** the word **"By:"** before the name.
5. **Print** your capacity (e.g. **Executor**) after the name.
6. Apply your **right-hand thumbprint** at the end of the line, following the instructions below.

Example: *By: John-james, Executor*

Thumbprint Requirement (End of Signature)

A thumbprint is required as an additional evidentiary mark supporting your signature. The thumbprint must be applied **lightly and carefully**.

Use a red **inkpad for print**.

How to Apply the Thumbprint Correctly

1. Use a **clean inkpad** suitable for fingerprints.
2. Lightly run your **right-hand thumb** across the inkpad until evenly coated.
 - o Do not overload the thumb with ink.
3. Lightly press your thumb once onto a **folded tissue or paper** to remove excess ink.
4. Place the thumbprint **lightly** at the end of the signature line, as indicated.

Important Thumbprint Rules

- Do **not** press hard — pressing too hard causes a blob.
- Too much ink will fill in the print and destroy detail.
- Do **not** roll the thumb.
- Do **not** smear.
- Do **not** make the print too large.
- The thumbprint must be placed **on or just above the line**, not below it.
- Apply **one clean print only**.



A light, clear print is correct.

A dark, filled-in, or oversized print is not.

If the thumbprint is unclear, begin again on a **fresh page**. Do not attempt to correct or overprint.

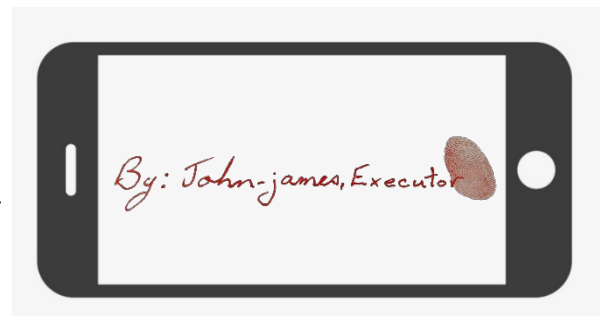
Example: *By: John-james, Executor* 

Photographing the Signature Sample

After completing the signature sample, take a photograph of it for upload.

Photo requirements:

- Clean white paper only.
- Good **natural light** or **bright artificial light**.
- No shadows, glare, or colour cast.
- Lay the paper **flat and level**.
- **Fill the phone screen with the signature area >>>**.
- Ensure the image is **in focus and level**.



Do not use filters, flash effects, or image enhancements.

A clear image is essential for accurate background removal.

Important: You are not signing a document at this stage. You are creating a **standalone signature sample only**.

Uploading the Signature Sample

You will upload:

- the **photograph of your signature sample**, and
- your **head-and-shoulders photograph**

when completing your **Electoral Roll application form** (AA / AB / BA / BB / CA / CB).

These uploads are made **before** any signing takes place.

Background Removal and Document Preparation

After you submit your application:

- the background is **removed** from your signature image and photograph,
- the cleaned signature and photo are prepared for use,
- the photo is placed into your Statutory Declaration document.
- the signature with background removed will be sent to the Declarant to use on Document.

The prepared document is then sent to you via **PandaDoc** for formal signing and witnessing.

You are signing a document that has been prepared using **your own handwritten signature sample and photograph**, not a generic or system-generated signature.

NOTE: PandaDoc is used solely as a secure delivery and signing platform. It presents your Statutory Declaration in final form using **your own handwritten signature and photograph**, allows you to sign and be witnessed remotely by a Commonwealth Justice of the Peace, and produces a clear, time-stamped record of execution. **PandaDoc does not create your signature, determine your standing, or confer authority** — it is simply the tool used to complete the signing and witnessing process.

When You Sign in PandaDoc

When you receive the PandaDoc document:

- your image will already be present,
- you will apply your signature as instructed during the signing process,
- the signing process must be witnessed by a Commonwealth Justice of The Peace.

Important Reminder

If the signature photo:

- is blurry,
- poorly lit,
- angled,
- cropped incorrectly,
- or on non-white paper,

background removal may fail and you may be asked to redo the process.

Take your time.

Do it once.

Do it correctly.

Standing is established by **clear, deliberate record**.

Commonwealth Custodians – Crown Servants

<https://commonwealthcustodians.org>

<https://commonwealthpublicnotice.org>

<https://commonwealthcustodians.org/enrolment-form/>

<https://commonwealthcustodians.org/electoral-roll-stat-decs-aa-ab-ba-bb-ca-cb/>